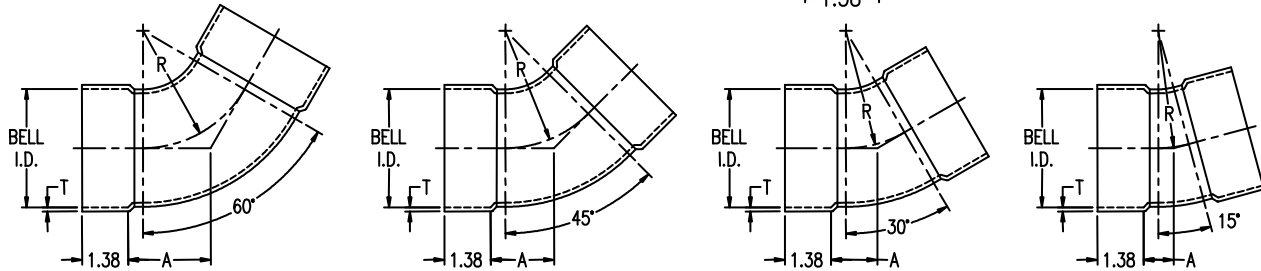
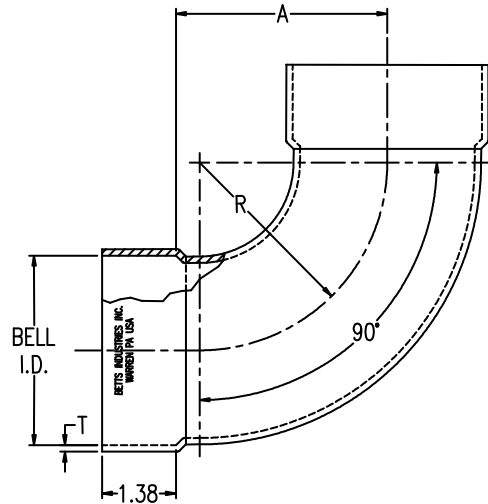


# Seamless Belled Elbow

**SHORT RADIUS**

Betts seamless belled elbows are designed for use on cargo tanks and satisfy a wide variety of piping needs. The seamless belled elbow offers multiple advantages over standard elbows. Significant reduction in joint preparation and fit-up time can be realized while the belled end allows for a fillet weld in place of a more difficult butt weld joint. Slight angular piping misalignments can be easily accommodated and since there is no longitudinal weld seam, the elbow is clean and leak free.

Seamless elbows are rated to 75 psig MAWP.



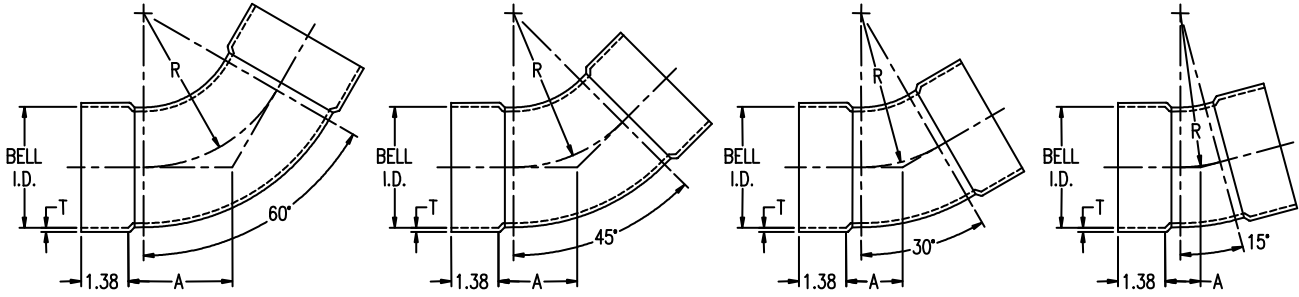
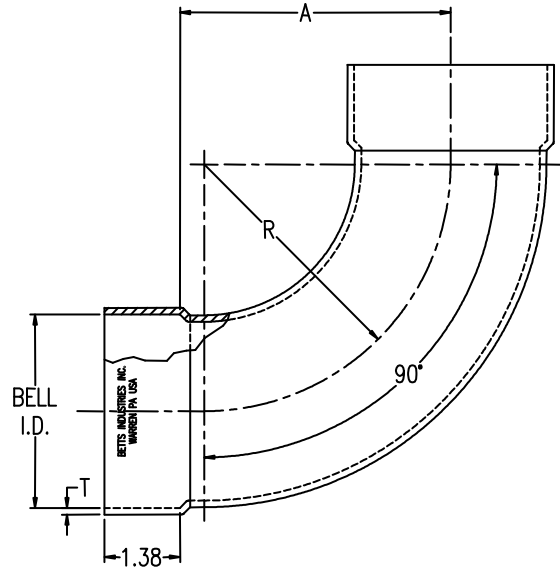
Pipe Size	Style (Short Rad.)	Material	Part No.	Weight lb. [kg]	T in. [mm]	A in. [mm]	R in. [mm]	Bell I.D. in. [mm]
3"	90° SR	6063 Alum.	BES390AL	1.14 [.51]	.120 [3.0]	3.94 [100.1]	3.50 [88.9]	3.53 [89.7]
	60° SR	6063 Alum.	BES360AL	.91 [.41]	.120 [3.0]	2.46 [62.5]		
	45° SR	6063 Alum.	BES345AL	.79 [.36]	.120 [3.0]	1.89 [48.0]		
	30° SR	6063 Alum.	BES330AL	.68 [.31]	.120 [3.0]	1.38 [35.0]		
	15° SR	6063 Alum.	BES315AL	.57 [.26]	.120 [3.0]	.90 [22.9]		
4"	90° SR	6063 Alum.	BES490AL	1.72 [.78]	.120 [3.0]	4.94 [125.5]	4.50 [114.3]	4.53 [115.1]
	60° SR	6063 Alum.	BES460AL	1.35 [.61]	.120 [3.0]	3.04 [77.3]		
	45° SR	6063 Alum.	BES445AL	1.16 [.52]	.120 [3.0]	2.31 [58.6]		
	30° SR	6063 Alum.	BES430AL	.97 [.44]	.120 [3.0]	1.65 [41.9]		
	15° SR	6063 Alum.	BES415AL	.78 [.35]	.120 [3.0]	1.04 [26.3]		

# Seamless Belled Elbow

**LONG RADIUS**

Betts seamless belled elbows are designed for use on cargo tanks and satisfy a wide variety of piping needs. The seamless belled elbow offers multiple advantages over standard elbows. Significant reduction in joint preparation and fit-up time can be realized while the belled end allows for a fillet weld in place of a more difficult butt weld joint. Slight angular piping misalignments can be easily accommodated and since there is no longitudinal weld seam, the elbow is clean and leak free.

Seamless elbows are rated to 75 psig MAWP.



Pipe Size	Style (Long Rad.)	Material	Part No.	Weight lb. [kg]	T in. [mm]	A in. [mm]	R in. [mm]	Bell I.D. in. [mm]
3"	90° LR	6063 Alum.	BEL390AL	1.33 [.60]	.120 [3.0]	4.94 [125.5]	4.50 [114.3]	3.53 [89.7]
	60° LR	6063 Alum.	BEL360AL	1.04 [.47]	.120 [3.0]	3.04 [77.2]		
	45° LR	6063 Alum.	BEL345AL	.89 [.40]	.120 [3.0]	2.30 [58.5]		
	30° LR	6063 Alum.	BEL330AL	.75 [.34]	.120 [3.0]	1.65 [41.8]		
	15° LR	6063 Alum.	BEL315AL	.60 [.27]	.120 [3.0]	1.03 [26.2]		
4"	90° LR	6063 Alum.	BEL490AL	2.10 [.95]	.120 [3.0]	6.45 [163.8]	6.00 [152.4]	4.53 [115.1]
	60° LR	6063 Alum.	BEL460AL	1.60 [.72]	.120 [3.0]	3.91 [99.4]		
	45° LR	6063 Alum.	BEL445AL	1.35 [.61]	.120 [3.0]	2.93 [74.5]		
	30° LR	6063 Alum.	BEL430AL	1.09 [.50]	.120 [3.0]	2.06 [52.2]		
	15° LR	6063 Alum.	BEL415AL	.84 [.38]	.120 [3.0]	1.24 [31.4]		